

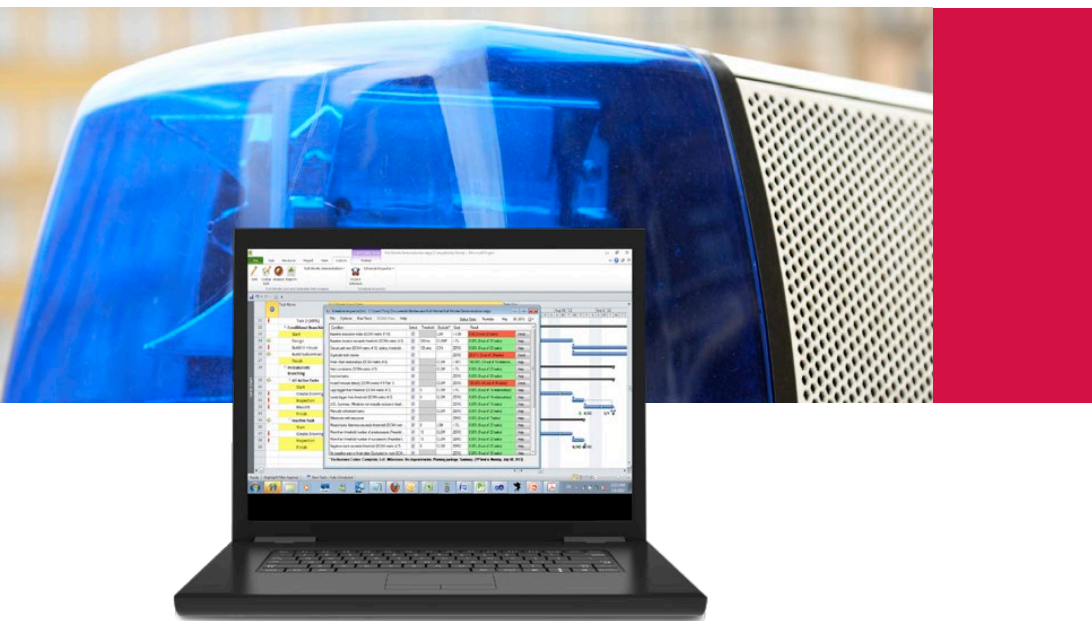


Flag offending  
tasks and print  
out tickets.

# Schedule Inspector

## Arresting results.

Improve the quality of your Microsoft® Project schedules by applying tests for best practice, consistent statusing, and early indications that the project is not on track.

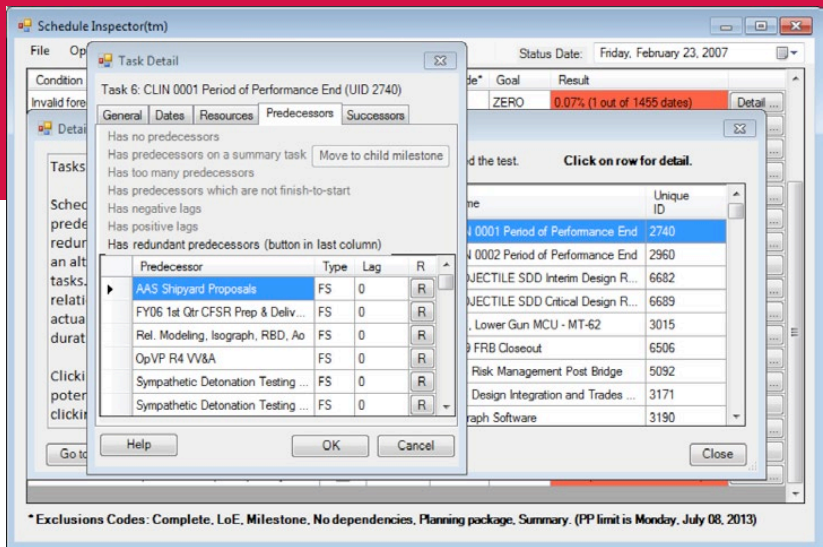


## Schedule Inspector from Barbecana

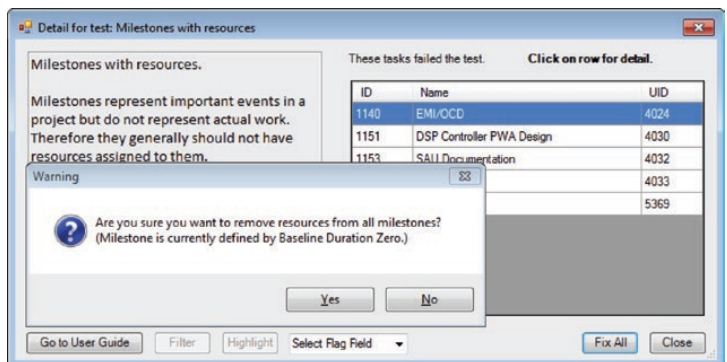
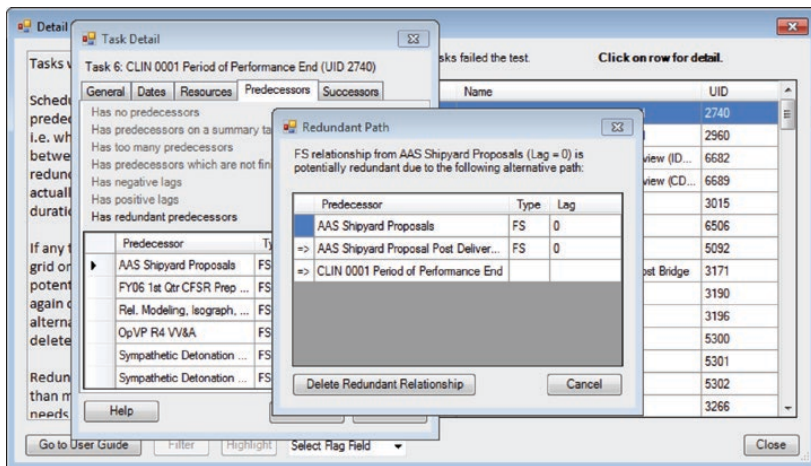
Barbecana's Schedule Inspector™ is an add-in to Microsoft Project® (2007 and above). It helps improve the quality of schedules by checking for the use of scheduling features and techniques that many think should be used sparingly or not at all.

Schedule Inspector is highly customizable. You need perform only those tests you think are appropriate to your circumstances, and most tests can be customized. Results are displayed color-coded on screen and can also be printed. Many problems can be fixed directly in Schedule Inspector, either globally or individually. Offending tasks can also be automatically highlighted in Project so that the user can fix the problems there.





For most conditions, it is possible to bring up a list of tasks which failed the test, to highlight or filter them in the current Project view, or click on individual tasks to get more detail. In this case the task has redundant predecessors. Clicking on the button shows the path which renders it redundant as shown in the next screen shot. The user can choose to delete the relationship.



Many problems can be fixed directly in Schedule Inspector, either individually or in some cases globally. Global changes are never made without prompting the user with details of exactly what is to going to be done.



## Alphabetical List of Available Tests

- Baseline execution index (DCMA metric # 14)
- Baseline duration exceeds threshold (DCMA metric # 8)
- Critical path length index (DCMA metric # 13)
- Critical path test (DCMA metric # 12; adding threshold does not delay designated finish task.)
- Duplicate task names
- Finish-Start relationships (DCMA metric # 4)
- Hard constraints (DCMA metric # 5)
- Inactive tasks
- Invalid forecast date(s) (DCMA metric # 9 Part 1)
- Invalid actual date(s) (DCMA metric # 9 Part 2)
- Lags bigger than threshold (DCMA metric # 3)
- Leads bigger than threshold (DCMA metric # 2)
- LOE tasks on critical path (Preamble to DCMA Guide)
- LOE, Summary, Milestone not mutually exclusive (Implied by DCMA Guide)
- Manually scheduled tasks
- Milestones with resources
- Missed tasks (lateness exceeds threshold) (DCMA metric # 11)
- More than threshold number of predecessors (Preamble to DCMA Guide)
- More than threshold number of successors (Preamble to DCMA Guide)
- Negative slack exceeds threshold (DCMA metric # 7)
- No baseline start or finish date (Excluded by most DCMA tests)
- No predecessors (DCMA metric # 1 Part 1)
- No successors (DCMA metric # 1 Part 2)
- No resources (DCMA metric # 10)
- Out of sequence progress (Preamble to DCMA Guide)
- Planning packages before cutoff date (Preamble to DCMA Guide)
- Slack exceeds threshold (DCMA metric # 6)
- Summary tasks with relationships (Preamble to DCMA Guide)
- Summary tasks with resources
- Tasks with redundant predecessors

## For more information

713-595-6688  
[barbecana.com](http://barbecana.com)



# BARBECANA

Barbecana Inc.  
1001 S. Dairy Ashford, Suite 100  
Houston, TX 77077  
USA

©2012 Barbecana Inc. All rights reserved. Printed in the USA.  
Full Monte is a trademark of Barbecana Inc.  
Microsoft® Project, Excel, Risk+® are the properties of their respective owners.