

---

## Schedule Inspector 2.3 Release Notes

---

### Table of Contents

<b>Schedule Inspector 2.3 Release Notes</b> .....	1
Introduction .....	2
Installation .....	2
Planned Duration Exceeds Threshold .....	2
Save Details to CSV.....	2
User Default Settings .....	3
Default Tests for New Projects .....	3
Test Selection Enhancements .....	3
Saving of Test Selections and Settings .....	3
Message Enhancements .....	4
Row Reference Numbers .....	4
Other Minor Changes.....	4
Bug Fixes .....	4
<b>Schedule Inspector 2.2 Release Notes</b> .....	7
Introduction .....	7
Test Settings.....	7
Updated Add-ins Menu.....	7
Trial Mode .....	7

## Introduction

This document describes the new and updated features in Schedule Inspector 2.3.

Updates in the version include:

- A new installation program.
- A new 'Planned Duration Exceeds Threshold' test.
- A new Save Details to CSV option
- A new User Default setting for tests.
- A new 'Basic Best Practice' collection of tests.
- More choice over the saving of settings.
- Message Enhancements.
- Row Reference numbers.
- Bug fixes.

*Note: One important change is that Schedule Inspector settings are again saved on a project-by-project basis as they were in version 2.1. The new User Default settings feature allows customers to assign the same basic settings to any new projects while being more flexible than the single settings used by Schedule Inspector 2.2.*

## Installation

Schedule Inspector 2.3 is being distributed with an entirely new installation mechanism. For standalone installations, the process is similar to earlier versions, but the installation now supports upgrading existing installations without first uninstalling older versions.

For corporate installation, the installation process now better supports 'push' installations and allows the corporate license information to be pushed with the installation.

Please see the Schedule Inspector User Guide for further information.

## Planned Duration Exceeds Threshold

The 'Planned Duration Exceeds Threshold' test is similar to the existing 'Baseline Duration Exceeds Threshold' (DCMA Metric Number 8) but compares the planned Duration (the Microsoft Project Duration field) to the threshold. This is useful where a baseline has not been set for the schedule.

## Save Details to CSV

A new option on the File menu allows the selected test details to be saved to a CSV file.

Task ID	Task UID	Taskname	Test Name	(Test Parameters)	Value
16	32	Integration	Duplicate task names	(Threshold: / Exclusions: / Goal:= 0%)	
17	33	Integration	Duplicate task names	(Threshold: / Exclusions: / Goal:= 0%)	
9	25	HW Complete	Hard constraints	(Threshold: / Exclusions: / Goal:< 5%)	MFO 8/28/2020
1	17	Sample Project	Negative slack exceeds threshold	(Threshold:0 / Exclusions: / Goal:= 0%)	-5 days
16	32	Integration	Negative slack exceeds threshold	(Threshold:0 / Exclusions: / Goal:= 0%)	-5 days
17	33	Integration	Negative slack exceeds threshold	(Threshold:0 / Exclusions: / Goal:= 0%)	-5 days
21	37	Delivery	Negative slack exceeds threshold	(Threshold:0 / Exclusions: / Goal:= 0%)	-5 days
2	18	Initiate	No predecessors	(Threshold: / Exclusions: SX / Goal:< 5%)	
19	35	Brochure Development	No predecessors	(Threshold: / Exclusions: SX / Goal:< 5%)	
21	37	Delivery	No successors	(Threshold: / Exclusions: SX / Goal:< 5%)	

## User Default Settings

A new option has been added to the Options menu to allow the user to save the currently selected settings as their User Default. This default will be used for new projects and may also be applied to any project from Options, Reset..., To User Default.

## Default Tests for New Projects

When a project is opened for the first time in Schedule Inspector, the initial test selection will be set to the new User Default. If the User Default has not been defined, then all tests will be selected. Previously, the default tests for a new project were based on the last project opened in Schedule Inspector.

## Test Selection Enhancements

The Options, Reset... menu has been modified as follows:

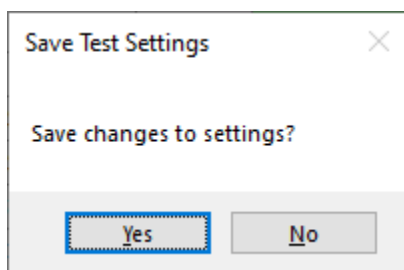
- All Tests (from 'Generic Default')
- For AACE 57R-09
- For DCMA 14-point
- For Basic Best Practice
- To User Default

The 'Basic Best Practice' option enables 15 basic schedule quality tests that are especially important when Monte Carlo schedule risk analysis is to be performed on a schedule.

Condition	Select	Threshold	Exclude*	Goal	Result	
Critical path test (Adding threshold does not delay designated finish task.)	<input checked="" type="checkbox"/>	120 wks	CSN	= 0%	0.00% (0 out of 15 tasks)	Help
Finish-Start relationships	<input checked="" type="checkbox"/>		L	> 90%	100.00% (17 out of 17 relationships)	Help
Hard constraints	<input checked="" type="checkbox"/>			= 0%	0.00% (0 out of 21 tasks)	Help
Inactive tasks	<input checked="" type="checkbox"/>			= 0%	0.00% (0 out of 21 tasks)	Help
Invalid actual date(s)	<input checked="" type="checkbox"/>		S	= 0%	Zero out of zero.	Help
Invalid forecast date(s)	<input checked="" type="checkbox"/>			ZERO	0.00% (0 out of 42 dates)	Help
Leads bigger than threshold	<input checked="" type="checkbox"/>	0		ZERO	0.00% (0 out of 17 relationships)	Help
Manually scheduled tasks	<input checked="" type="checkbox"/>			ZERO	0.00% (0 out of 21 tasks)	Help
Negative slack exceeds threshold	<input checked="" type="checkbox"/>	0		ZERO	0.00% (0 out of 21 tasks)	Help
No predecessors	<input checked="" type="checkbox"/>		LS	= 1	13.33% (2 out of 15 tasks)	Detail ...
No successors	<input checked="" type="checkbox"/>		LS	= 1	6.67% (1 out of 15 tasks)	Detail ...
Out of sequence progress	<input checked="" type="checkbox"/>		S	= 0%	0.00% (0 out of 15 tasks)	Help
Planned duration exceeds threshold	<input checked="" type="checkbox"/>	44 days	CLSP	ZERO	0.00% (0 out of 15 tasks)	Help
Slack exceeds threshold	<input checked="" type="checkbox"/>	22 days		= 0%	0.00% (0 out of 21 tasks)	Help
Tasks with redundant predecessors (i.e., implied by other logic.)	<input checked="" type="checkbox"/>			= 0%	0.00% (0 out of 21 tasks)	Help

## Saving of Test Selections and Settings

When the user closes Schedule Inspector, and they have adjusted test selections and/or settings, they will now be prompted to save changes.

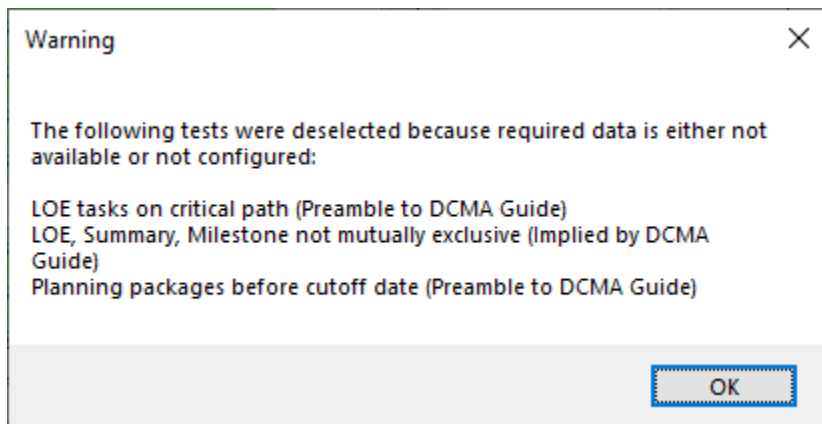


If they choose Yes, the updated settings are saved for the project. If they choose No, then the updated settings will be discarded, and the project will revert to the previously saved settings when it is next opened in Schedule Inspector.

As well as saving settings to the ScheduleInspectorData.txt file used by previous versions, Schedule Inspector 2.3 will also save the current project settings into the Project Summary Task notes field if it has not been otherwise used by the user. This will allow Schedule Inspector to display the last saved set of tests even if it is opened by a different user. The information in the Notes field can be deleted by the user if the field is required for other purposes.

## Message Enhancements

The warning issued when tests cannot be enabled as tests are reset from the Options, Reset menu has been enhanced to list the tests that could not be enabled.



Reasons to not enable a test include:

- Level of Effort (LOE) may not be defined on the Configuration dialog.
- Planning Packages (PP) may not be defined on the Configuration dialog.
- Milestones may not be defined on the Configuration dialog.
- A baseline may not be available or defined on the Configuration dialog.

## Row Reference Numbers

A row reference number has been added to the main Schedule Inspector display. The row number is just a sequential line number and is not associated with any specific test.

## Other Minor Changes

The pop-up Tool Tip for the 'Exclude' column has been removed as it could be obtrusive when attempting to update Exclusion values for multiple tests.

The exclusions that allow user defined text (PP, LOE, User Exclusion) now force the specified characters to uppercase and perform a 'contains' comparison with the selected text field rather than an 'equals'. This allows a single text field to be used for multiple exclusions. Separate the values with a comma.

## Bug Fixes

### Original Release Schedule Inspector for Microsoft Project 2.3.21088.2 (March 29, 2021)

An issue when processing Leads/Lag in non-English versions of Microsoft Project has been resolved.

The option to reset tests to 'All Tests' (formerly 'Generic Default') has been corrected to attempt to enable all tests. Note that some tests may still be disabled if required data is not available.

The option to reset tests to AACE 57R-09 has been corrected so it selects the appropriate tests.

The labelling of the 'End of Discrete Work' task selection on the Configuration dialog has been corrected to indicate this is used for DCMA test #12, not #13 as previously displayed.

The Configuration dialog selected baseline now correctly displays (None) if this was selected in previous sessions.

**Update Release Schedule Inspector for Microsoft Project 2.3.21111.1 (April 21, 2021)**

Corrected an issue where a user changing the display options for duration units from the language defaults (on the Options, Advanced tab) could cause the reading of lead/lag durations to fail.

Added information regarding the installed language duration units and current project duration units to the Help, About dialog.

**Update Release Schedule Inspector for Microsoft Project 2.3.21112.1 (April 22, 2021)**

Fixed an issue introduced in 2.3.21111.1 where Schedule Inspector would incorrectly format durations when the Microsoft Project option to include a space before duration unit labels was disabled.



## Introduction

This document describes the new and updated features in Schedule Inspector 2.2.

Updates in the version include:

- The same test settings are used for all projects.
- The Add-Ins menu has been updated.
- Trial mode is now 14 days.

## Test Settings

In previous versions of Schedule Inspector, the selected tests were remembered on a project by project basis. This could become onerous to maintain when the tests had to be reset for each new project opened.

In Schedule Inspector 2.2 the selected tests are now applied to any project opened in the Schedule Inspector.

Note: If a specific test cannot be performed on a specific project, for example if the project has no baseline then tests like Baseline Execution Index cannot be performed, the test will be deselected and will not be reenabled until it is selected on a project that does have a baseline.

## Updated Add-ins Menu

The Add-ins menu items for Schedule Inspector has now been made consistent with Barbecana's Full Monte menu configuration.

The screenshot shows the Microsoft Project Professional interface. The title bar reads 'Full Monte Demonstration.mpp - Project Professional'. The ribbon includes 'File', 'Task', 'Resource', 'Report', 'Project', 'View', 'Add-Ins', 'Developer', and 'Help'. The 'Add-Ins' menu is open, showing 'Full Monte Administration' (with a red logo) and 'Schedule Inspector Administration' (with a blue and red logo). Below the menu, the Gantt chart area shows two tasks: 'Full Monte Demonstration' (ID 0) and 'Sample Project' (ID 1). Both tasks have a duration of 70 days and start on 6/1/20 8:00 AM. The 'Full Monte Demonstration' task ends on 9/4/20 5:00 AM, and the 'Sample Project' task ends on 9/4/20 5:00 AM.

ID	Task Name	Duration	Start	Finish
0	Full Monte Demonstration	70 days	6/1/20 8:00 AM	9/4/20 5:00 AM
1	Sample Project	70 days	6/1/20 8:00 AM	9/4/20 5:00 AM

## Trial Mode

The free trial period has been reduced from 30 to 14 days. After 14 days from initial installation, the software will change to Academic Mode unless a purchased license key is entered. In Academic Mode the software will only work on projects with less than 100 tasks and no linked projects.