

## Table of Contents

<b>Full Monte SRA for Primavera P6 – Release Notes version 3.7</b>	<b>3</b>
Full Monte SRA 3.7 for P6	3
Initial Release June 2024	3
Full Monte Options	3
Analysis Focal Items	3
Login Dialog Enhancements	4
View Enhancements	4
Risk Analysis Dialog Enhancements	5
Date Formats	5
Full Monte SRA 3.6 for P6	6
Update March 2024	6
Update December 2023	6
Update October 2023	6
Update July 2023	6
Update May 2023	6
Update April 2023	9
Update March 2023	9
Initial Release (November 2022)	10
Manage Risks	10
Graph View Data Export	10
Other View Enhancements	10
Configuration Enhancements	10
Merge Delay Change	10
Other Minor Changes	10
Bug Fixes	10
<b>Full Monte SRA for P6 – Release Notes version 3.5</b>	<b>11</b>
Full Monte SRA 3.5 for Primavera P6 Update 2 (March 2022)	11
Graph View Enhancements	11
Other Minor Enhancements	13
Bug Fixes	14
Full Monte SRA 3.5 for Primavera P6 Update 1 (January 2022)	14
Minor Enhancements	14

Bug Fixes ..... 14

Full Monte SRA 3.5 for Primavera P6 (August 2021) ..... 14

Contractor Edition License ..... 14

SQLite Database User Management ..... 14

Schedule Margin Flag ..... 14

Bug Fixes ..... 14

**Full Monte SRA for Primavera P6 version 3.4 Release Notes ..... 15**

Introduction ..... 15

Installation ..... 15

Compatibility ..... 15

Sensitivity Tornado Views ..... 15

Bug Fixes ..... 16

## Full Monte SRA 3.7 for P6

For further information on any feature updates please see the Full Monte SRA for Microsoft Project Installation Guide or the Full Monte SRA User Guide.

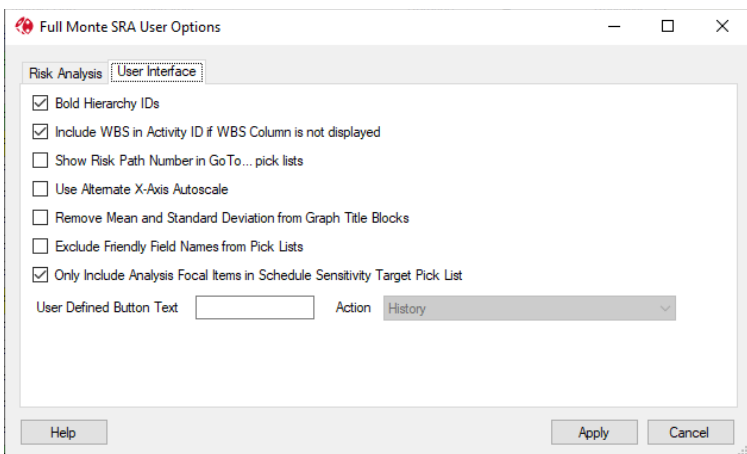
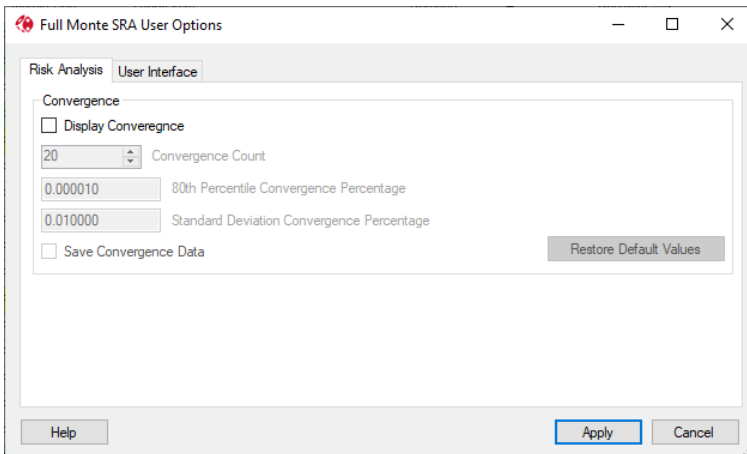
Initial Release June 2024

Version 3.7.24156.x or later

The focus of Full Monte SRA version 3.7 for Primavera P6 is to improve usability by introducing an Options dialog, an Analysis Focal Item flag to reduce clutter in Schedule Sensitivity drop lists, and View enhancements.

### Full Monte Options

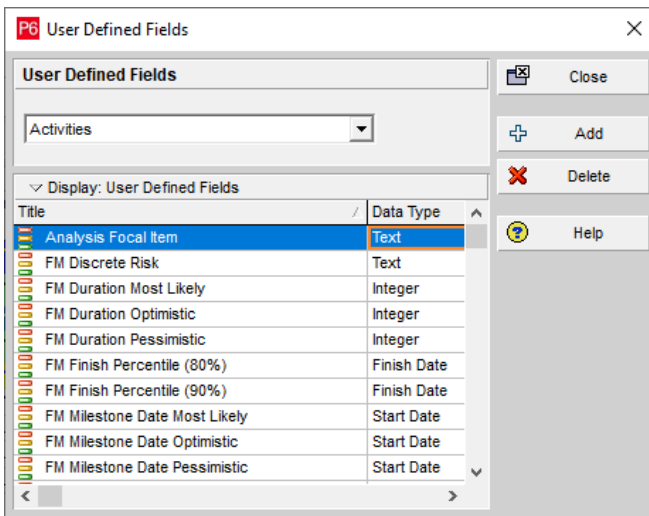
A new Options dialog has been added to the Full Monte File menu. This allows the user to configure many Full Monte user interface and processing options.



### Analysis Focal Items

A new Full Monte field, 'Analysis Focal Item', has been added to allow customers to identify tasks of special interest. The field can be used to filter views, and optionally, filter the Schedule Sensitivity Target drop list.

The Analysis Focal Item field is defined as a User Defined Field in P6. The Type is Text and acceptable values include True and Yes.



The Analysis Focal Item field can be used to filter views and also, optionally, restrict milestones displayed in the Schedule Sensitivity Target selection for Risk Analysis.

### Login Dialog Enhancements

Made the Database Alias dropdown on the Full Monte Login Dialog read-only to avoid confusion if text is entered in the drop down.

Made the Database Alias/Name on the database connection dialog read only unless a new connection is being created.

### View Enhancements

View Enhancements including:

- Summary WBS row highlighting if the Summary highlight is selected.
- WBS column now includes the full WBS at each level.
- Option to include WBS in Activity ID column if WBS column is not displayed.
- Showing Distribution Type of (none) for Milestones.
- More consistent highlighting of selected row editable columns.
- New Go to... option on right-click context menu to make logic tracing easier.

HWvsSW - Full Monte View: Activity Edit

File	Edit	View	Help	Risk Analysis	Graphs	Tomado	Search for Name or ID	>>
WBS	Activity ID	Activity Name	Remaining Duration	Duration Distribution Type	Duration Optimistic	Duration Most Likely	Duration Pessimistic	Finish Histogram
<b>HWvsSW</b>	<b>HWvsSW</b>	Hardware vs Software	78 days	Triangular	75%	100%	125%	NA
HWvsSW	00	Initiation	5 days	Triangular	75%	100%	125%	NA
HWvsSW.00	A1000	Initiate	5 days	Triangular	75%	100%	125%	NA
HWvsSW	01	Development	60 days	Triangular	75%	100%	125%	NA
HWvsSW.01	01	Hardware	60 days	Triangular	75%	100%	125%	NA
HWvsSW.01.01	A1010	HW Design	20 days	Triangular	75%	100%	125%	NA
HWvsSW.01.01	A1020	HW Part A	20 days	Triangular			125%	NA
HWvsSW.01.01	A1030	HW Part B	19 days	Triangular			125%	NA
HWvsSW.01.01	A1040	HW Integrate	20 days	Triangular			125%	NA
HWvsSW.01.01	A1045	HW Complete	0	(None)				
HWvsSW.01	02	Software	54 days	Triangular	75%	100%		
HWvsSW.01.02	A1050	SW Design	18 days	Triangular	75%	100%		
HWvsSW.01.02	A1060	SW Code A	18 days	Triangular	75%	100%	125%	NA

Apply Template

Inherit Distribution

Inherit Correlations

Go to ...

Pred FS 00.A1000

Succ FS 01.01.A1020





Succ FS 01.01.A1030

If the WBS column is not displayed the WBS can be included in the Activity ID column.

HWvsSW - Full Monte View: Activity Edit (Customized)

FileEditViewHelpRisk AnalysisGraphsTomado

Search for Name or ID

Activity ID	Activity Name	Remaining Duration	Duration Distribution Type	Duration Optimistic	Duration Most Likely	Duration Pessimistic	Finish Histogram
 HWvsSW	Hardware vs Software	78 days	Triangular	75%	100%	125%	NA
 HWvsSW.00	Initiation	5 days	Triangular	75%	100%	125%	NA
A1000	Initiate	5 days	Triangular	75%	100%	125%	NA
 HWvsSW.01	Development	60 days	Triangular	75%	100%	125%	NA
 HWvsSW.01.01	Hardware	60 days	Triangular	75%	100%	125%	NA
A1010	HW Design	20 days	Triangular	75%	100%	125%	NA
A1020	HW Part A	20 days	Triangular	75%	100%	125%	NA
A1030	HW Part B	19 days	Triangular	75%	100%	125%	NA

### Risk Analysis Dialog Enhancements

The Sensitivity Target drop list is now searchable. Enter Task ID, Task Unique ID, or characters from the Task Name to filter to drop list.

Risk Analysis

Number of Simulations: 10000 Full Backward Pass ☐

Honor Mandatory Constraints ☒

Preferred Date/Duration Histogram Interval: Day

Schedule Sensitivity Target: d

Cost Sensitivity Target: A1520 (Contract Delivery)

Help OK Cancel

### Date Formats

The following date formats have been added to those available from the View, Date Format menu.

31/06/2024  
 31/06/2024 16:33  
 2024/06/31  
 31.06.2024

**Note:** If you have views configured with specific date formats you may need to reselect the required date format after upgrading to 3.7.

See the User Guide Appendix I for further information about date formats.

## Full Monte SRA 3.6 for P6

### Update March 2024

#### Version 3.6.24080.x or later

The Full Monte Contractor Edition for P6 now includes support for Microsoft SQL Server databases as well as P6 Standalone SQLite databases.

The Full Monte for P6 database connection information is now saved in a way that supports the customers use of commas in file path names.

Changed the default save behavior to no longer save old style results in P6 task memo fields. If the old-style results are still required, a new option SAVEOLDSTYLERESULTS=TRUE has been added to the FullMonteUserConfiguration.txt configuration file. Note: This supersedes the SUPPRESSAVINGHISTOGRAMS option added in 3.6.23279.1 that is now deprecated.

### Update December 2023

#### Version 3.6.23362.x or later

Fixed a bug so that P6 Codes can be displayed in Full Monte columns.

Added a 'New' button to the Manage Connection dialog to simplify creation of new database connections.

### Update October 2023

#### Version 3.6.23279.x or later

Added a new option, SUPPRESSAVINGHISTOGRAMS=TRUE, that can be added to either FullMonteSystemConfiguration.txt or FullMonteUserConfiguration.txt to suppress the saving of histogram data between sessions. This reduces the time taken to save large projects.

Added a new FullMonteSystemConfiguration.txt option, DISABLEPASSWORDS=TRUE, to no longer require Full Monte passwords for P6 SQL Server and Oracle databases in the same way that Full Monte passwords are not required for SQLite databases. This can also be used to reset the Full Monte Administrator user's password.

Fixed a bug where Full Monte would fail to connect to Standalone SQLite databases if a SQL Server or Oracle database was accessed first in the same session to manage Licenses or Users.

Changed the Trial mode to allow connections to SQL Server and Oracle databases.

### Update July 2023

#### Version 3.6.23209.x or later

Modified Full Monte to load project WBS structures 'on demand' to reduce the time taken to open individual projects and reduce memory consumption where customers have large WBS structures on many projects.

Fixed an issue where Input Milestone Uncertainty was not read from previously saved data correctly.

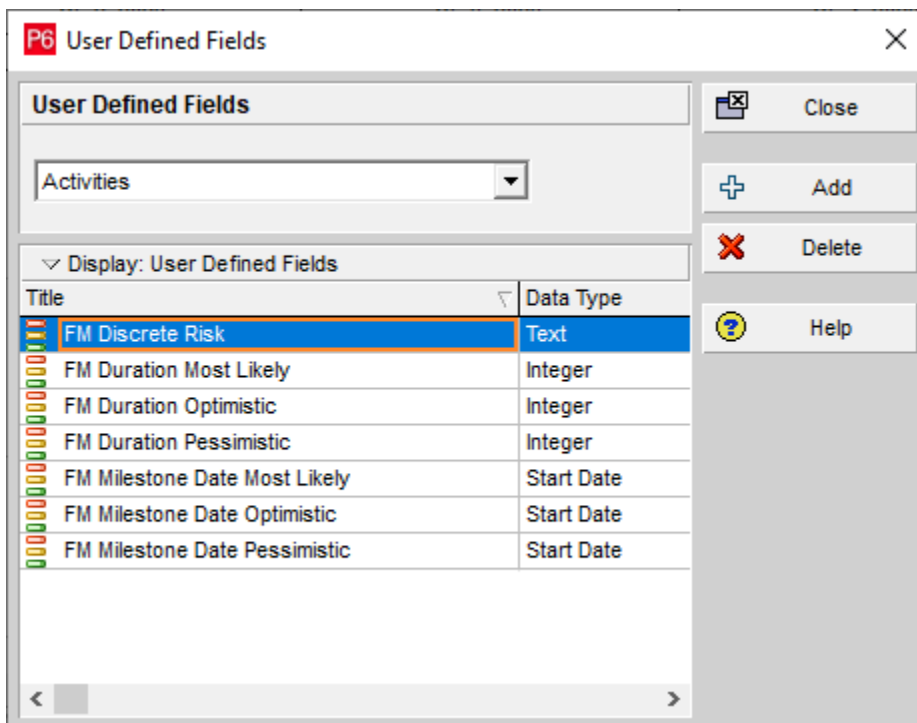
Improved the display of 'foreign' activity information and their predecessors/successors.

### Update May 2023

#### Version 3.6.23129.x or later

Added an 'Import' capability to load uncertainty data from P6 User Defined Fields.

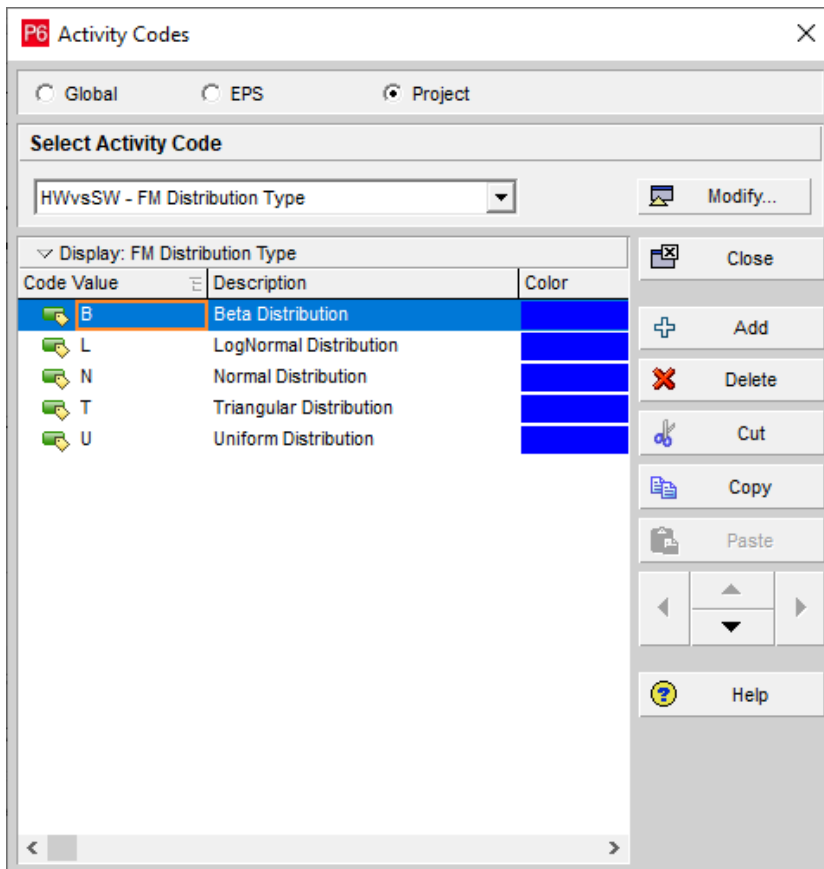
The following User Defined fields can be created in P6 for use with Import:



An additional field 'FM Distribution Type' can be created either as a User Defined Field or an Activity Code.

The Duration Uncertainty fields must be defined as integer, and must contain data in the same units as the activity durations. The Date Uncertainty fields must be defined as Start Date. The FM Distribution Type and Discrete Risk must be text fields.

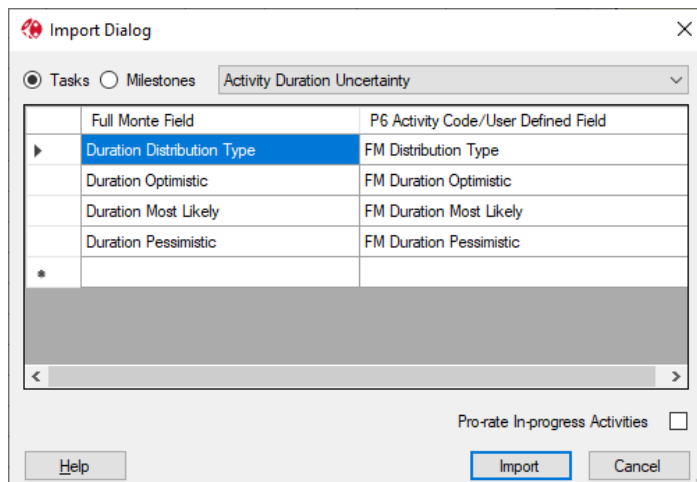
The following shows an example of FM Distribution Type as an Activity Code.



The value can be either be Triangular or T, Beta or B etc. The same field or code is used to define the distribution type for both Duration and Milestone uncertainty data.

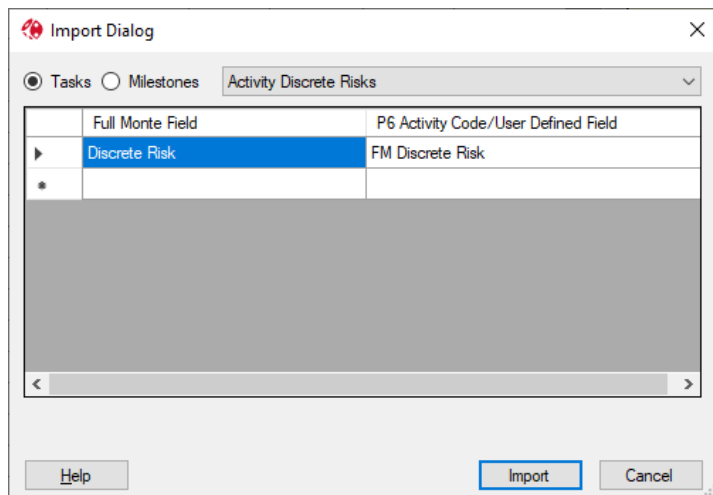
A new Import option is available on the Full Monte File menu of the Activity Edit window. There are three import configurations defined:

1) Import Activity Duration Uncertainty information:

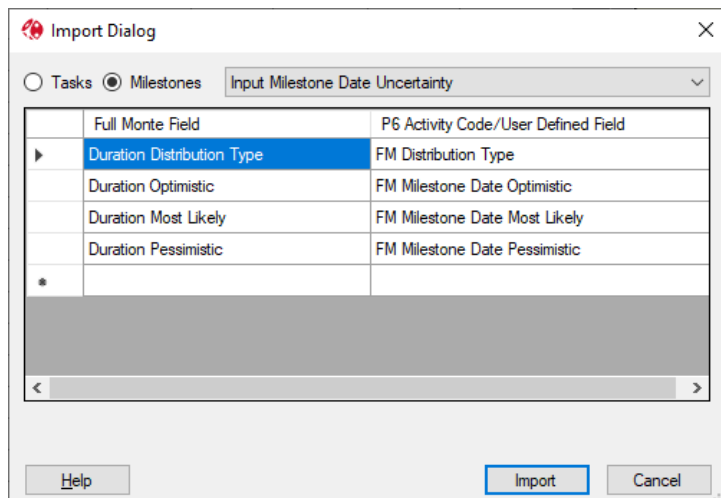




2) Import Activity Discrete Risk assignments:



3) Import Input Milestone Date uncertainty:



Note: Unlike Full Monte for Microsoft Project, the listed fields are not editable as P6 allows the creation of dedicated User Defined Fields or Activity Codes (lookup tables).

Fixed an issue where the chance of achieving the deterministic finish for 'Finish Histograms' was not always displayed.

Update April 2023

Version 3.6.23104.x

Full Monte now saves the Manual X-Axis marking options separately for Date and Cost graphs.

Changed the algorithm used to draw graph manual X-Axis scales to better match the specified manual scale.

Added a new FullMonteUserConfiguration.txt option (USENEWXAXISSCALE=TRUE) to allow the user to select the new algorithm for marking graph X-Axis scales when not in manual mode.

Update March 2023

Version 3.6.23069.x

Added a FullMonteUserConfiguration.txt option (SIMPLIFYGRAPHTITLE=TRUE) to simplify the Graph title area by omitting Mean and Standard Deviation information.

Slightly reduced the required gap between graph x-axis markers.

## Initial Release (November 2022)

### Version 3.6.22349.x

#### Manage Risks

New Duration and Cost Impact columns have been added to the Manage Risks dialog. If the Duration Impact is non-zero, any duration specified will be added to the remaining duration of any tasks to which the risk has been assigned when the risk is active (based on Probability) in the simulation. Assigned tasks will always be active but the duration and cost will change if the risk is active. If the Duration Impact column is zero, then the assigned tasks will be made active/inactive based on probability as before although any Cost Impact will also be applied. The Manage Risks dialog has also been enhanced to show any assigned tasks (up to a limit of 14 characters after which you will still have to click to see a full list as before).

#### Graph View Data Export

Added a new option on the Graph view File menu to 'Copy to CSV'. This saves the histogram data (X axis interval and Y axis percentage hits) to a CSV file for use with Excel.

#### Other View Enhancements

The 'Results', 'Tornado (Cost)' and 'Tornado (Schedule)' views have been updated with more useful information as standard. If customers use these views at present, they will retain their current settings until the user chooses 'Reset the Current View to Default' from the View menu. A new 'Risk Path Gantt' view has been added.

#### Configuration Enhancements

It is now possible to create a file called FullMonteSystemConfiguration.txt in the product installation folder. This file can contain commands to change the location used by Full Monte to display documentation and the location of the Full Monte user folder (normally <Documents>\Barbecana\Full Monte P6>).

The LocalFiles.txt copy mechanism has been enhanced to allow user control over versions and to support copying files from multiple source locations to the Full Monte user folder. The file LocalFiles.txt is no longer created by default and must be created if required.

A new user configuration file 'FullMonteUserConfiguration.txt' can be created in the Full Monte user folder. Currently the released commands include an optional user button.

#### Merge Delay Change

In earlier versions of Full Monte, Merge Delay calculations would not consider predecessors that were inactive (0% probability of existence). In 3.6 we now consider information from inactive predecessors.

#### Other Minor Changes

Added a 'Tornado' button to the Full Monte edit window to allow quick access to the Tornado (Schedule with Index) report.

Made several changes to better support monitors with high Windows scaling factors (typically high resolution 4k monitors).

#### Bug Fixes

The right Y-Axis could be a duplicate of the left Y-Axis on detailed sensitivity graphs.

Fixed an issue where the Edit, Template preview graph did not show the correct most likely value when the template Duration Confidence Interval was not 100%.

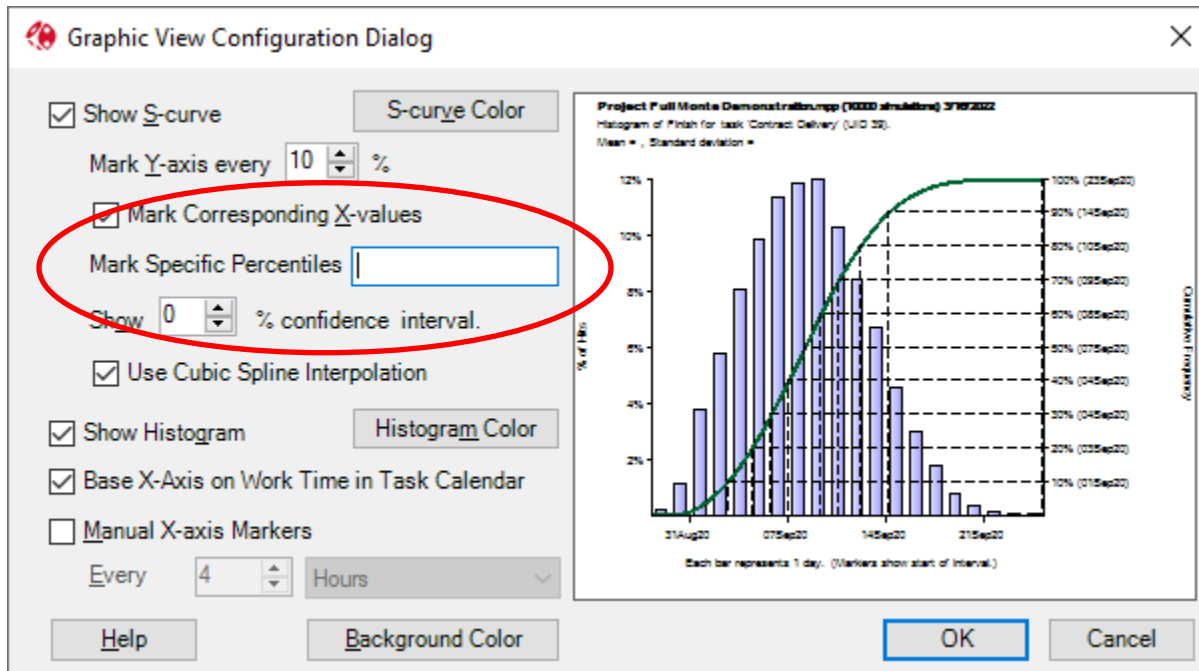
## Full Monte SRA 3.5 for Primavera P6 Update 2 (March 2022)

Version 3.5.22081.1

### Graph View Enhancements

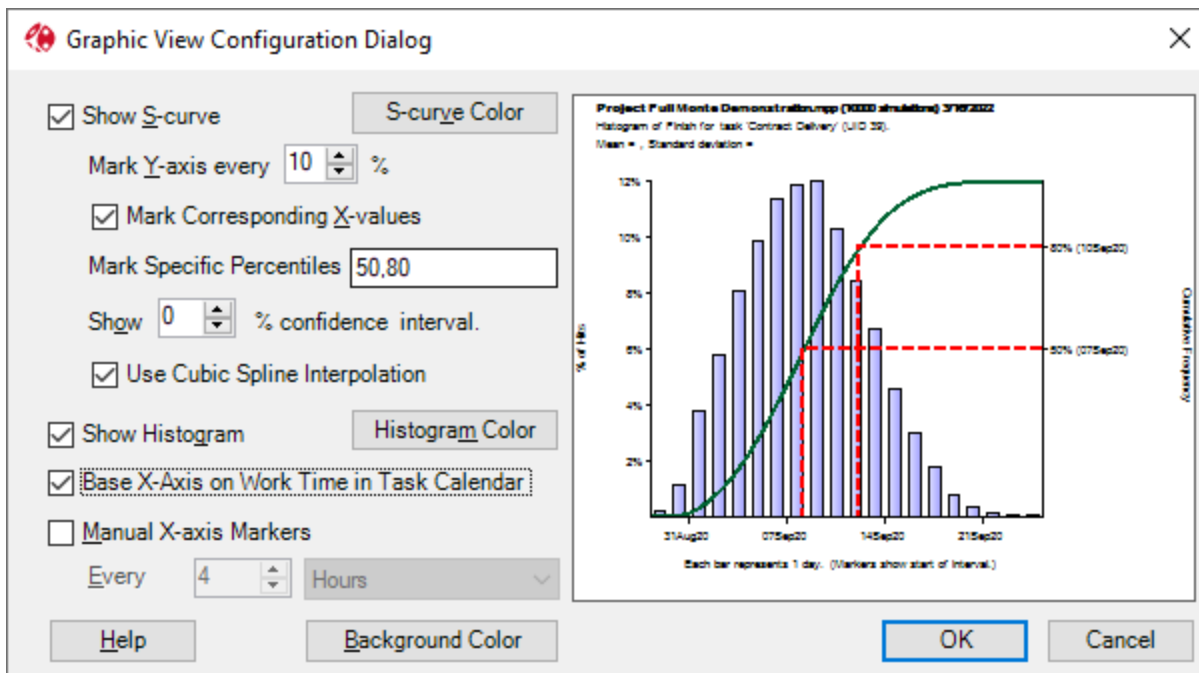
Enhanced the Graph View with options to highlight specific percentiles when marking corresponding X-values.

A new option to 'Mark Specific Percentiles' has been added to the Graph View Configuration Dialog.

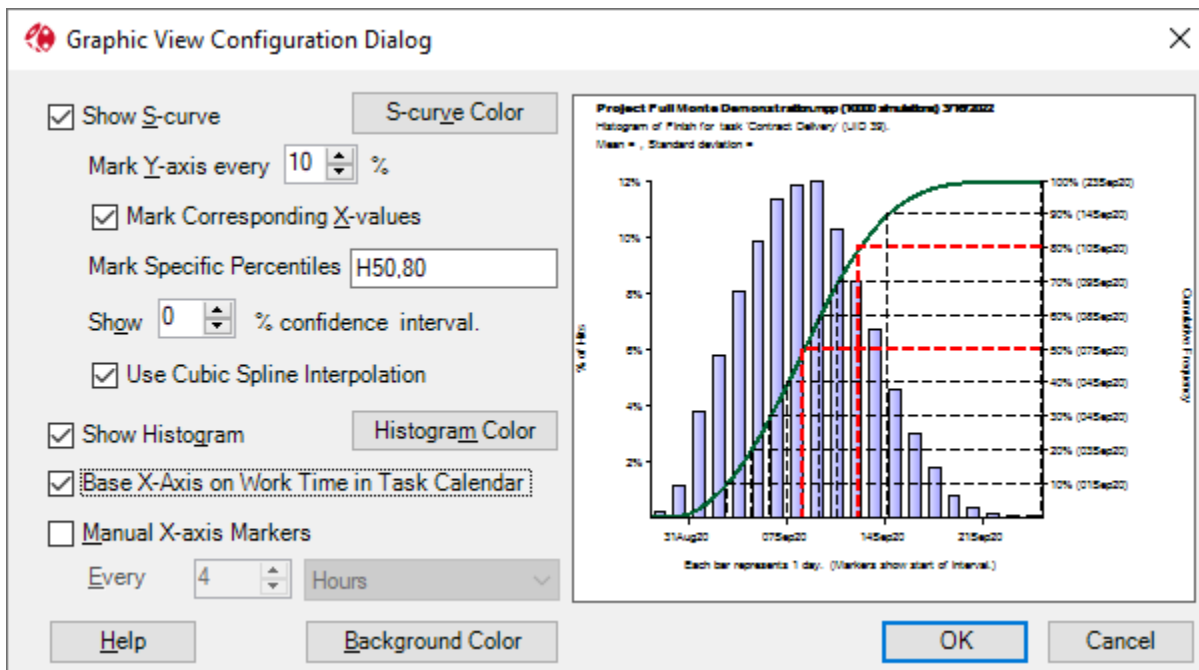


The 'Mark Specific Percentiles' control accepts formatting characters and values.

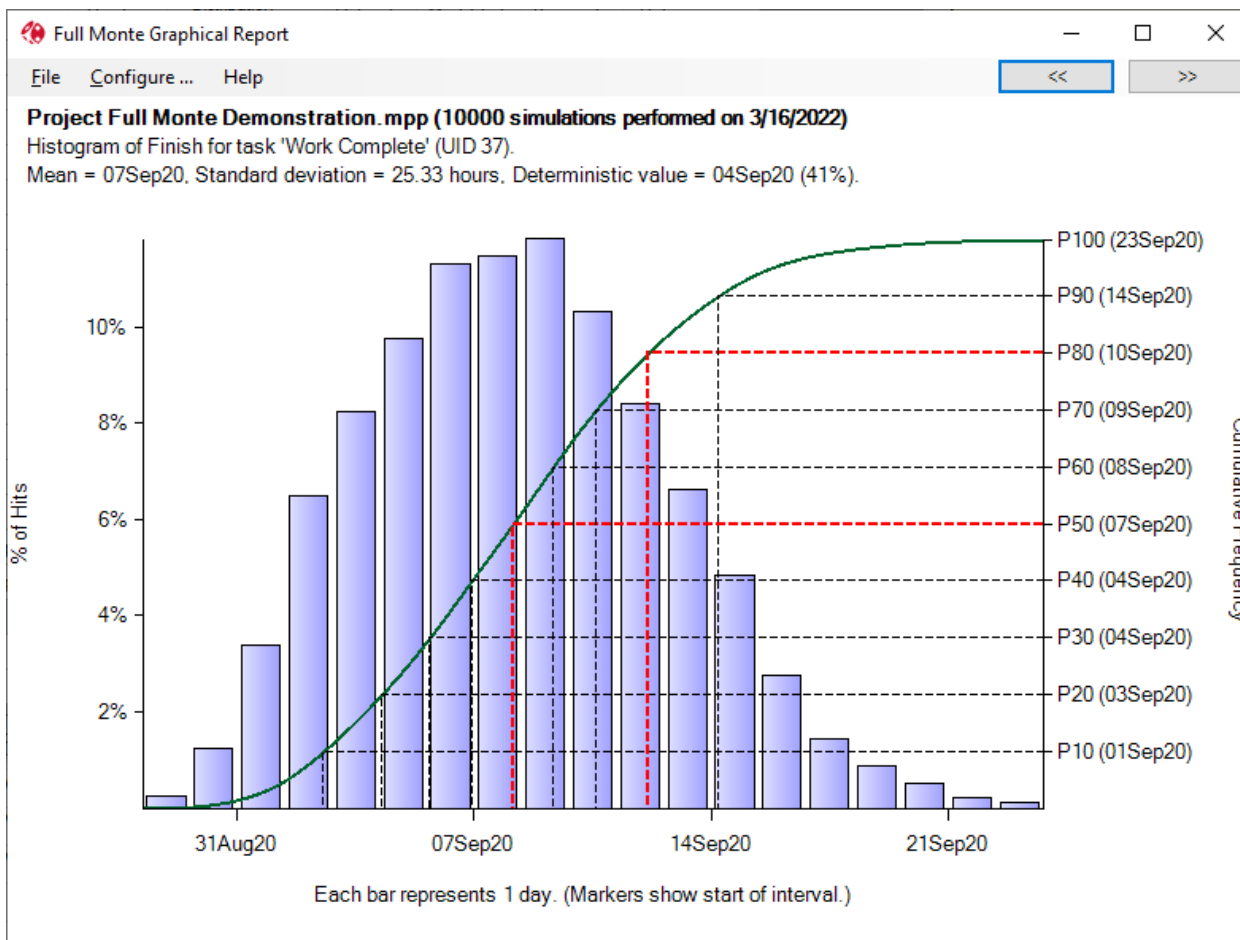
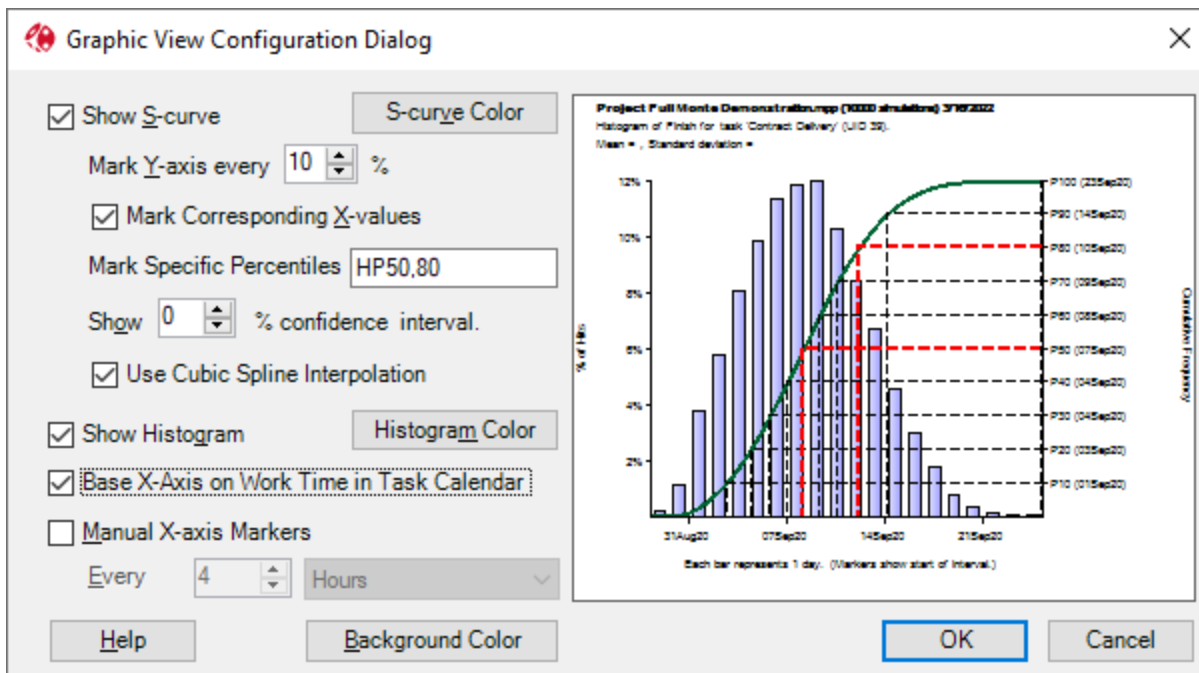
Values – A list of specific Y axis values to display. For example, if the values 50,80 are entered then the graph will appear as shown here: (only the 50% and 80% intersections are shown).



If the values are prefixed with an 'H', then all values will be displayed but the listed values will be highlighted as shown here:



Lastly, if any of the values are prefixed with a P then the Y-axis will be displayed using the 'P' notation rather than as percentages. So P80 rather than 80% etc.



Note: 'Mark Specific Percentiles' configuration data is not backwards compatible with Full Monte 3.4. if a view containing 'Mark Specific Percentiles' data is opened in 3.4 the data will be deleted.

### Other Minor Enhancements

Enhanced the SQL log (if enabled) to include details of returned rows.

### Bug Fixes

Fixed an issue with the 'Default' Gantt bar header for the Tornado Chart view not displaying.

Fixed an issue where assigning uncertainty using Templates could fail if a WBS element had the same ID as an Activity.

Fixed an issue where non-Administrator Full Monte users could manage Full Monte Licenses and Users when connected to a SQL Server or Oracle database. As noted below, all users are Administrators for SQLite databases.

## Full Monte SRA 3.5 for Primavera P6 Update 1 (January 2022)

Version 3.5.22021.x

### Minor Enhancements

Added an option to change the handling of Mandatory Constraints to the Risk Analysis dialog.

### Bug Fixes

Fixed an issue if you immediately attempt to create a new database connection in a new install without first opening an existing database.

## Full Monte SRA 3.5 for Primavera P6 (August 2021)

### Contractor Edition License

A new license type is now available for Full Monte for P6. The new license type begins with the characters 'SG'. The Contractor Edition license only supports P6 SQLite standalone databases and simulations on less than 1500 activities.

### SQLite Database User Management

When connecting to a P6 SQLite database, it is no longer necessary to identify Full Monte Users and Administrators. All users are automatically enabled to use Full Monte for Machine and Contractor Edition licenses when connecting to a P6 SQLite data source.

### Schedule Margin Flag

A new feature to allow the automatic identification of activities that represent **Schedule Margin** in the schedule has been added. **Schedule Margin** represents a contingency for risk/uncertainty and should be inserted before contractual delivery milestones. This feature allows Schedule Margin tasks to be identified with a P6 User Defined Field and automatically sets their Probability of Existence to 0% so they do not impact the schedule risk analysis. For further information see Appendix G of the Full Monte SRA User Guide.

### Bug Fixes

Fixed an issue where Database Concurrent Licenses were not correctly recognized.

Fixed an issue where WBS calendars were not correctly recognized on SQL Server.

### Table of Contents

<b>Full Monte SRA for Primavera P6 version 3.5 Release Notes Update 2</b> .....	1
Full Monte SRA 3.5 for Primavera P6 Update 2 (March 2022) .....	3
Graph View Enhancements.....	11
Other Minor Enhancements .....	13
Bug Fixes .....	14
Full Monte SRA 3.5 for Primavera P6 Update 1 (January 2022) .....	14
Full Monte SRA 3.5 for Primavera P6 (August 2021) .....	14
Contractor Edition License.....	14
SQLite Database User Management.....	14
Schedule Margin Flag.....	14
Bug Fixes .....	14
<b>Full Monte SRA for Primavera P6 version 3.4 Release Notes</b> .....	15
Introduction .....	15
Installation .....	15
Compatibility.....	15
Sensitivity Tornado Views .....	15
Bug Fixes .....	16

### Introduction

This document describes the new and updated features in Full Monte SRA 3.4 for Primavera P6.

The product version number has been updated to match the equivalent Full Monte for Microsoft Project version (3.4) using the same code base.

### Installation

Previous versions of Full Monte for P6 must be uninstalled before installing Full Monte SRA 3.4 for P6.

### Compatibility

Full Monte SRA for P6 version 3.4 is data compatible with Full Monte for P6 version 1.4. It is not data compatible with earlier versions of Full Monte for P6. If version 3.4 is used to connect to databases previously used with Full Monte for P6 version 1.3 or earlier, existing data will be converted and will not longer be compatible with version 1.3 or earlier.

Full Monte SRA for Primavera P6 version 3.4 is compatible with Oracle Primavera P6 Professional R16.2 through R19.12.

### Sensitivity Tornado Views

A new option has been added to Sensitivity Tornado views to allow the mean finish of the selected schedule sensitivity target to be displayed as a header on the split bar column.

The option is enabled by setting the Column Header Text to 'Default'.

Bar Definition Dialog

Data Type: Date

	Bar Start:	Bar Finish	Line No.	Color	Bar Height	Show Zero-Length Bar	Sort on:
▶	Optimistic Mean Finish of Target	Pessimistic Mean Finish of Tar...	1		75	<input type="checkbox"/>	Bar Length
*						<input type="checkbox"/>	

Column Header Text: Default

☐ Extend Grid Lines Downward ☒ Show Nonwork Time ☐ Split Bars for Nonwork Time

Help OK Cancel

The view will then display the sensitivity target and mean finish date in the column header.

Activity ID	Activity Name	Remaining Duration	Percent Critical	Percent Critical (Sensitivity)	Sensitivity Index	Sensitivity Index 50.0	Optimistic Mean Finish of Project	Pessimistic Mean Finish of Project	Project Mean Finish 08-Aug-17 10:54		
									2017	Aug	
A1010	HW Task 1	20 days	89%	89%	58%		03-Aug-17 13:27	15-Aug-17 10:54	30	06	13
A1040	HW Task 4	20 days	89%	89%	58%		03-Aug-17 13:27	15-Aug-17 10:54			
A1020	HW Task 2	20 days	45%	45%	29%		07-Aug-17 13:49	14-Aug-17 11:58			
A1030	HW Task 3	20 days	44%	44%	28%		07-Aug-17 14:05	14-Aug-17 11:33			
A1000	Initiate	5 days	97%	97%	16%		07-Aug-17 11:13	09-Aug-17 12:54			
A1090	Integration	5 days	97%	97%	16%		07-Aug-17 11:13	09-Aug-17 12:54			
A1080	SW Task 4	18 days	8%	8%	5%		08-Aug-17 10:33	10-Aug-17 09:01			
A1050	SW Task 1	18 days	8%	8%	5%		08-Aug-17 10:33	10-Aug-17 09:01			
A1070	SW Task 3	18 days	4%	4%	2%		08-Aug-17 10:47	09-Aug-17 13:06			
A1060	SW Task 2	18 days	4%	4%	2%		08-Aug-17 10:47	09-Aug-17 12:55			
A1110	Brochure Development	10 days	3%	3%	1%		08-Aug-17 10:52	08-Aug-17 15:31			

## Bug Fixes

### Original Release Full Monte SRA for P6 version 3.4 (Sep 2020)

Fixed an issue where the Sensitivity Tornado views bar column did not correctly show the sensitivity target split date if the selected Sensitivity Target was changed by running Risk Analysis from within the Tornado Chart.

Fixed an issue where Named and Concurrent user license's reported invalid License Key if the Licensee Name contained spaces.

Improved the presentation of Finish dates where the activity finished on the last working period of a day, but the finish date was being shown as the first working period of the following working day.

Fixed an issue where changing the size/location of views did not prompt the user to save changes to the view.